

DATASHEET

Industrial Splice housing for DIN Rail without front panel RAL7035



General data

Fully assembled metal housing
For DIN Rail mounting
Cable entries top/bottom, prepared for M20
Delivery incl. screws for front panel

Included: 1 x splice distributor housing

1x splice cassette

1 x splice holder for 12 crimp splices (Attach of an optional additional splice holder only with double-sided adhesive tape)

1 x cable gland M20

1 x Alu DIN Rail clip

Delivery unassembled and without Front panel

Dimensions: 61x115x113mm

Allgemeine Daten

With housing	True
With front plate	False

This datasheet was created automatically on 13-01-2025 . Technical changes reserved.



DATASHEET

Industrial Splice housing for DIN Rail without front panel RAL7035

Mounting method	DIN rail (top hat rail)
With pigtails	False

General data

Height	115.0 mm
--------	----------

Abmessungen

Width	61.0 mm
-------	---------

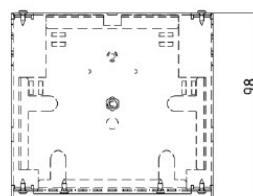
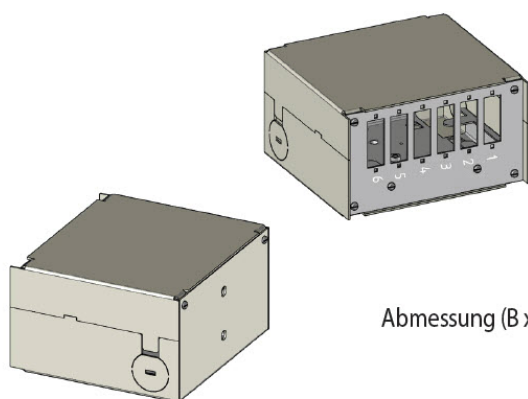
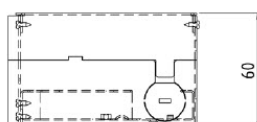
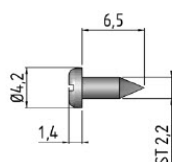
Dimensions

Depth	113.0 mm
-------	----------

Available variants

ArtNr.	Bezeichnung	Colour	Suitable for number of couplings/adapters	RAL-Nummer
53705.1V3	Industrial Splice housing for DIN Rail without front panel RAL7035	grey	12	7035

Drawings



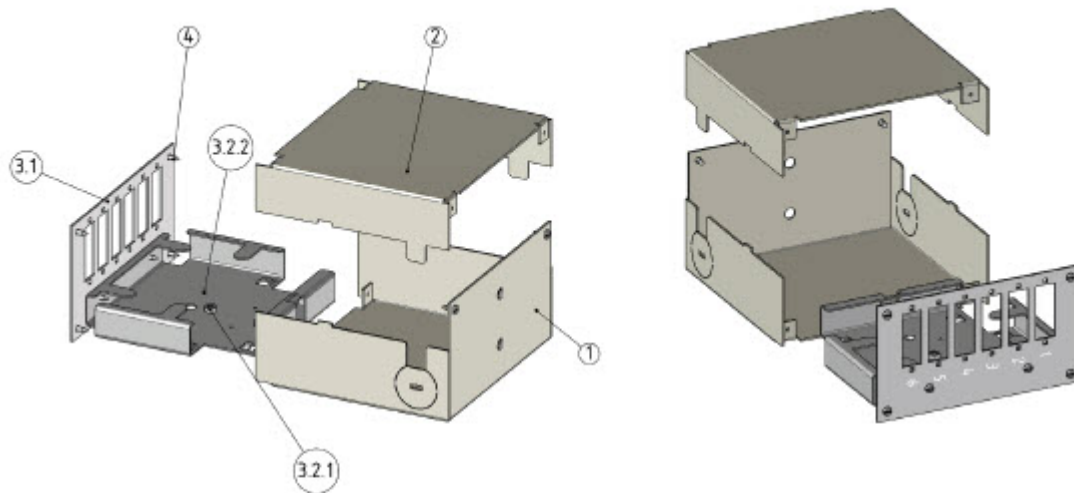
Abmessung (B x H x T), 61 x 115 x 113mm

This datasheet was created automatically on 13-01-2025 . Technical changes reserved.



DATASHEET

Industrial Splice housing for DIN Rail without front panel RAL7035



Nr.	Beschreibung	Q'ty
1	Gehäuseteil 1	1
2	Gehäuseteil 2	1
3.1	Frontblende (Nicht im Lieferumfang)	
3.2.1	Gewindeniet	1
3.2.2	Montageplatte	1
4	Zylinderblechschraube	8

This datasheet was created automatically on 13-01-2025 . Technical changes reserved.

